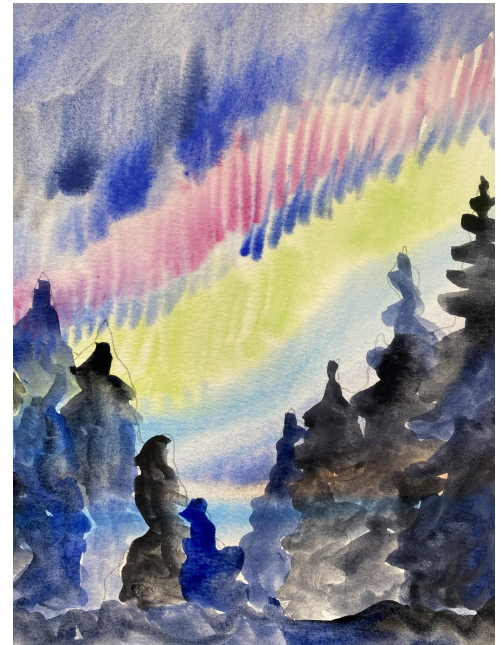


Lesson 1: Northern Lights Landscape

Winter Watercolor Series

Taught by Nan Onkka for Grand Marais Art Colony, 2021



National Core Arts Standards:

VA:Cr3.1.3a: Elaborate visual information by adding details in an artwork to enhance emerging meaning

VA:Cr2.1.4a Explore and invent art-making techniques and approaches

VA: Cn10.1.3a: Develop a work of art based on observation or surroundings

Techniques:

- Wet on Wet
- Wet on Dry

Connections:

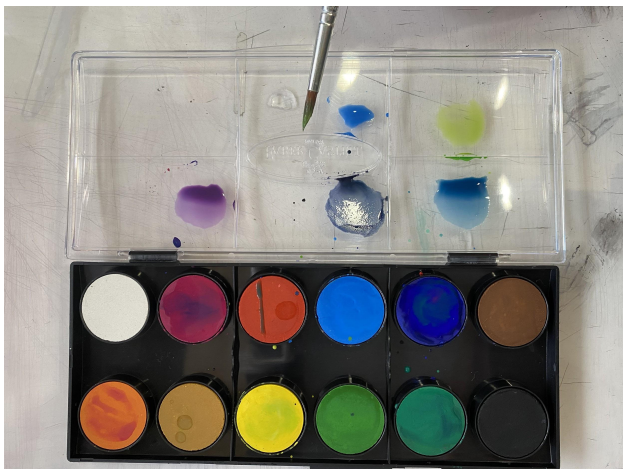
- Northern Lights
- Observational Drawings

Part 1: Wet on Wet - Painting the Background

1. Set up a workspace at your desk or table. Your workspace should be clean and easy to wipe if any paint or water spills. You will need: watercolor paint set, paintbrush, water cup with clean water, watercolor paper (you can choose to use one large paper or cut it in half to create two smaller artworks), paper towel, and pencil.



2. With a clean, wet brush, mix a few colors on your palette - blues, greens, purples, etc - to represent the northern lights. The more water you add, the lighter the color will be.

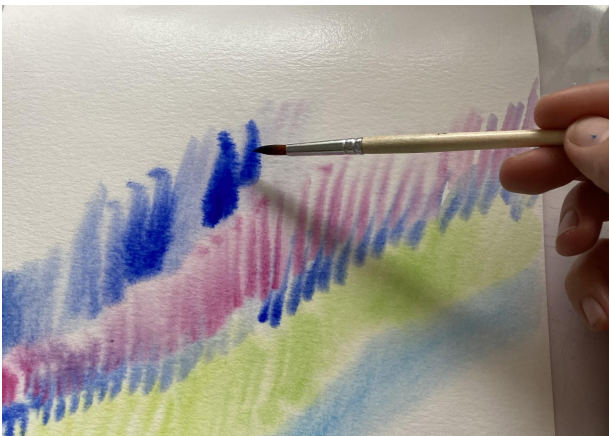


3. Rinse out your brush. With clean water, use your paintbrush to cover the entire background of your painting. The paper should be shiny wet.



(It is normal for your paper to curl during this part!)

4. While the paper is still shiny wet, start adding dabs of color. I like to use short vertical lines to represent the northern lights. Rinse your brush out between colors. The colors should spread and blend as you add them. (If they do not, gently paint more clean water onto the paper.)



5. When you are done, let your paper **dry completely** while you complete Part 2.

Part 2: Drawing the Trees

1. Observe trees out your window.

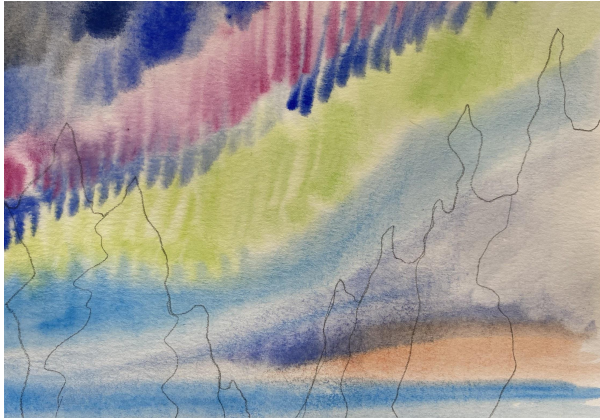


2. Practice sketching your trees on a piece of scratch paper.
 - **EXTRA CHALLENGE!** While the main focus should be the trees, you are welcome to add extra details, such as animals, buildings, or people to your drawing.



Part 3: Wet on Dry - Painting the Trees

1. Before moving onto this step, make sure your painting is **completely dry** so that you do not damage your paper.
2. Draw your scene in pencil on your dry watercolor painting. Make sure to draw **very lightly** so that your drawing is easy to erase if you make any mistakes.



3. Using a clean paintbrush, mix a dark color on your palette. I like to mix black and blue together.
4. Carefully paint the trees so that they are a solid, dark color. Continue until you are finished.



5. When you have finished painting your trees, it is time to clean up!
 - Rinse out your paintbrush with clean water (dab it on the paper towel to make sure it does not have paint remaining on it)
 - Let the watercolor paints air dry (or gently blot them with a paper towel)
 - Wipe down your table with a clean rag
6. When your painting is completely dry, don't forget to sign and date it. Congratulations on creating your own unique painting!